

# Sussex-Wantage Schools District Newsletter

October 29, 2021

## Calendar of Events

### **October**

10/29; SWPTO Trunk or Treat @ CEL

### **November**

11/4-11/5; SCHOOL CLOSED

11/9; 7pm SWPTO Meeting Virtual

11/18; 7pm SWBOE Mtg @ SMS

11/19; EARLY DISMISSAL-Parent Teacher conferences

11/22; EARLY DISMISSAL-Parent Teacher conferences

11/23; EARLY DISMISSAL-Parent Teacher Conferences

11/24; EARLY DISMISSAL

11/25-11/26; SCHOOL CLOSED Happy Thanksgiving!

### **December**

12/7; 7pm SWPTO Mtg Virtual

12/23; EARLY DISMISSAL

12/23; 7pm SWBOE Mtg @ SMS

12/24; SCHOOL CLOSED

12/27-12/31; SCHOOL CLOSED



The 12-month calendar is available to print here on our website

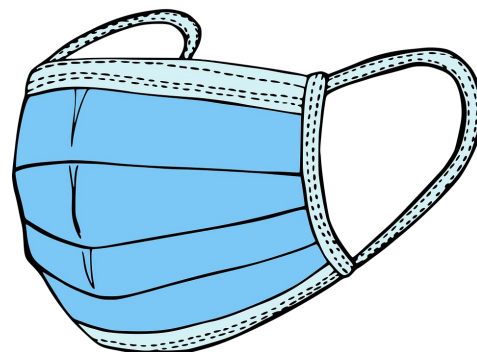
[12-month Calendar](#)

Don't forget to check out our website

[www.swregional.org](http://www.swregional.org)

Please send students to school with a proper fitting mask

Please note that our school nurses are going through many masks in their offices. Please provide your child with an extra mask in their book bag should the one that they are wearing break. Thank you for helping to keep our students and staff safe!





***Congratulations SMS students for the month for  
October***

***6th Grade- Victoria Muller  
7th Grade- Charles Robinson  
8th Grade- Shannon Coyle***

# Cafeteria News

Breakfast and lunch are available at each school in the district, free of charge for all students for the 2021-22 school year.

---

Click [here to view school menus](#)



View your menu <https://swregional.nutrislice.com/>

---



Before/After Care registration is now open.

Go to the district website [for the application.](#)



## Sussex-Wantage PTO

The SWPTO will be hosting their annual Trunk or Treat on Friday, October 29. This is a sell-out event every year, so get your tickets early! <https://www.eventbrite.com/e/sussex-wantage-ptο-trunk-or-treat-2021-tickets-178889662797>



SWPTO 2021-22 Family Membership sign-up is open! We are so excited for the school year to begin and your \$5 per family membership fee goes a long way to help us provide programs, materials, and events at our schools. Families can sign up here:

[https://forms.zohopublic.com/sussexwantagepto/form/SussexWantagePTOMembershipSignUpPAID/formperma/SfOKSGp9fio6\\_oL5M-AzXJ9MQd\\_g-kwKxOwj1IcoiYc](https://forms.zohopublic.com/sussexwantagepto/form/SussexWantagePTOMembershipSignUpPAID/formperma/SfOKSGp9fio6_oL5M-AzXJ9MQd_g-kwKxOwj1IcoiYc)

All info is on our website <https://www.swpto.org/>



# Community Events

You're  
Invited!

It's time to  
press play.



Fun with friends. New adventures.  
Making a difference. You're ready to go.

**You are invited to our Meet & Greet Event with  
Girl Scouts!**

**Join us on Monday, November 1<sup>st</sup> from 6:30pm – 7:30pm on Zoom**

**Please RSVP to Lissette Tufaro at [ltufaro@gsnnj.org](mailto:ltufaro@gsnnj.org)  
by October 30 to receive the link.**

**Troops are forming now! Meet some leaders and Girl Scouts while  
doing some fun activities.**

📞 973-248-8200    💻 [www.gsnnj.org](http://www.gsnnj.org)    📱 [f](#) [t](#) [v](#) [i](#) [p](#) @gsnnj

**girl scouts**   
of northern  
new jersey

# Community Events



## Talking Trauma with Tierney

*A More In-Depth Look at the Impact of Trauma on Children*

Monday, November 1st ❖ 5:30 p.m.

Featuring ...

**Charlene Armstrong Mayer & Tierney Veliz,**  
*Center for Evaluation & Counseling*



Trauma Expert  
Tierney Veliz

**Not Comfortable in Person? *Join Us by Zoom!***

**Join Zoom Meeting**

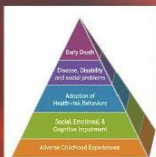
[https://us06web.zoom.us/j/88927731005?](https://us06web.zoom.us/j/88927731005?pwd=Tm9ZZ3dBMEcwZndTTXFLV2lsdHNoQT09)  
[pwd=Tm9ZZ3dBMEcwZndTTXFLV2lsdHNoQT09](https://us06web.zoom.us/j/88927731005?pwd=Tm9ZZ3dBMEcwZndTTXFLV2lsdHNoQT09)

Or call 1-929-205-6099

Meeting ID: 889 2773 1005  
Passcode: 517985



This is an in-person event.  
*All attendees must be vaccinated against Covid-19.*



**Pizza provided—  
Advance Registration Required.**

**Call 973-940-3500  
to sign up today!**

127 Mill Street  
Newton, NJ 07860



# Community Events

Sussex Fire Department Auxiliary

*Autumn*

**RAFFLE**

Tickets: 1 for \$10 and 3 for \$25

**ON SALE NOW**

## **PRIZES**

**1ST - \$600 GIFT CARD**

**2ND - \$300 GIFT CARD**

**3RD - \$100 GIFT CARD**

DRAWING on SUN 12/5, 10am, at Santa Breakfast

• **FUNDRAISER** •

For any questions, please contact our  
committee: 973-896-8225  
201-704-3107

# Community Events



Registration is now open for  
Sussex-Wantage Wildcats Wrestling

Click here to register;

<http://www.sussex-wantage-wrestling-club.sportssignup.com/site/>

Register before October 9th and receive a \$25 early  
registration discount per child.

Practices scheduled to begin mid November.



# My Haunted House Adventure



Y	P	G	A	X	R	Q	T	X	T	X	O	B	U
C	U	R	S	E	J	U	T	L	U	M	H	A	S
M	I	D	N	I	G	H	T	Y	W	M	D	T	Y
M	G	A	Q	M	D	H	P	L	A	T	V	L	S
A	V	F	U	M	L	E	T	N	M	C	W	B	J
E	G	F	J	K	P	V	S	O	A	O	E	F	K
R	J	Y	U	I	L	I	O	U	T	W	H	D	A
C	O	L	E	T	O	N	N	M	B	A	F	G	E
S	F	L	Z	N	U	A	Z	O	L	Y	Q	L	R
T	L	I	C	Y	N	O	C	L	D	P	E	I	C
S	A	H	H	X	V	M	W	G	A	T	E	G	O
I	S	C	E	E	C	A	V	A	P	T	R	H	F
M	H	P	J	P	Y	Q	L	X	C	P	I	T	F
D	L	P	M	A	D	U	P	A	S	N	E	N	I
J	I	Z	C	A	K	I	P	T	E	W	I	I	N
K	G	H	O	S	T	U	C	V	R	M	O	N	S
R	H	K	L	E	H	M	A	G	Y	U	H	G	A
A	T	Z	R	J	M	R	R	D	T	N	P	G	G
D	C	P	A	B	P	N	B	K	P	Y	L	Y	G
B	D	Q	D	U	P	O	B	C	I	T	T	A	I

Attic	Dark	Mansion
Bat	Decay	Midnight
Chilly	Eerie	Mist
Cobwebs	Flashlight	Moan
Coffin	Gate	Moon
Creak	Ghost	Owl
Curse	Hallway	Raven
Damp	Lightning	Scream

© 2016 puzzles-to-print.com

Email Jen Armstrong  
jarmstrong@swregional.org with newsletter submissions